

# Winterm™ 3000 Series Add-on Administrators Guide

Issue: 083004

This page intentionally blank.

# **Winterm™ 3000 Series Add-on Administrators Guide**

**Issue: 083004**

883825-01 Rev. B  
August 2004

Wyse Technology Inc.  
3471 North First Street  
San Jose, CA 95134-1801

This page intentionally blank.

## Copyright Notice

© 2004, Wyse Technology Inc. All rights reserved.

This manual and the software and firmware described in it are copyrighted. You may not reproduce, transmit, transcribe, store in a retrieval system, or translate into any language or computer language, in any form or by any means, electronic, mechanical, magnetic, optical, chemical, manual or otherwise, any part of this publication without express written permission.

## End User License Agreement (“License”)

A copy of the Wyse Technology End User License Agreement is included in the software and provided for your reference only. The License at <http://www.wyse.com/license> as of the purchase date is the controlling licensing agreement. By copying, using, or installing the software or the product, you agree to be bound by those terms.

## Notice Regarding the MPEG-4 Visual Standard

The software that you downloaded to install on this device may include MPEG-4 visual decoding technology. MPEG LA, L.L.C. requires the following notice:

USE OF THIS PRODUCT IN ANY MANNER THAT COMPLIES WITH THE MPEG-4 VISUAL STANDARD IS PROHIBITED, EXCEPT FOR USE DIRECTLY RELATED TO (A) DATA OR INFORMATION (i) GENERATED BY AND OBTAINED WITHOUT CHARGE FROM A CONSUMER NOT THEREBY ENGAGED IN A BUSINESS ENTERPRISE, AND (ii) FOR PERSONAL USE ONLY; AND (B) OTHER USES SPECIFICALLY AND SEPARATELY LICENSED BY MPEG LA, L.L.C.

If you have questions regarding this Notice, please contact MPEG LA, L.L.C., 250 Steele Street, Suite 300, Denver, Colorado 80206; Telephone 303 331.1880; FAX 303 331.1879.

## Trademarks

Wyse, WY, and WyseWorks are registered trademarks, and the Wyse logo, Winterm logo, Wyse, Winterm, Wyse Expedian, and Alcatraz are trademarks of Wyse Technology Inc. Rapport is a registered trademark of Rapport Technologies Inc., a division of Wyse Technology.

ICA is a registered trademark and MetaFrame is a trademark of Citrix Systems Inc.

Microsoft, Windows, Windows CE, Windows NT, Windows XP, and Windows Terminal Server are registered trademarks of Microsoft Corporation.

All other products are trademarks and/or registered trademarks of their respective companies.

Specifications subject to change without notice.

## Restricted Rights Legend

You acknowledge that the Software is of U.S. origin. You agree to comply with all applicable international and national laws that apply to the Software, including the U.S. Export Administration Regulations, as well as end-user, end-use and country destination restrictions issued by U.S. and other governments. For additional information on exporting the Software, see <http://www.microsoft.com/exporting>.

## Ordering Information

For availability, pricing, and ordering information in the United States and Canada, call 1-800-GET-WYSE (1-800-438-9973) or visit us at <http://www.wyse.com>. In all other countries, contact your sales representative.



# Contents

## 1 Introduction

- About this Guide 1
  - Organization of this Guide 1
- Wyse Technical Support 2
  - Links to User and Administrator Guides and Services 2

## 2 Before You Begin Installing the Add-ons

- Preparing for Installation 3
  - Determining the Amount of Free Flash Memory 4
- Obtaining an Add-on Package from Wyse Technology 5
  - Verifying an Add-on Package Contents 5
    - Installation Files 6
    - Removal Files 6

## 3 Installing and Removing the Add-ons

- Installing an Add-on Using Rapport Administrative Software 7
  - Registering an Add-on Package in the Software Repository 8
  - Distributing an Add-on Package 10
- Installing an Add-on Using Remote Administrator 3000 (RA3000) 11
- Installing an Add-on Using FTP Pull 15
- Removing an Add-on 16
  - Removing an Add-on Using Local Controls 16
  - Removing an Add-on Using Rapport Administrative Software 16

## 4 Add-on Bundle for Winterm™ 3000 Series Readme Documentation

- Overview 17
  - About the Add-on Bundle 18
- Aironet Wireless 2.3 20
  - About the Add-on 20
  - About the Adapters 20
  - Features 20
  - Requirements and Recommendations 21
  - Important Feature Information 21
- AutoPower 1.0 22
- BootP 2.01 23
- Certificates 1.0 23
- DialUp 2.1 23
- Edgeport 23
  - About the Add-on 23
  - Requirements and Recommendations 24
  - Important Feature Information 24
- ELO Touch Screen 25
  - Features 25

Requirements and Recommendations	25
Important Feature Information	25
Independent Computing Architecture (ICA) 8.01	26
About the Add-on	26
Features	26
Internet Explorer 6.0	27
Features	27
Languages	28
French Language	28
German Language	28
Spanish (Traditional) Language	28
JETCET PRINT Professional 3.01	28
Features	28
Requirements and Recommendations	29
Important Feature Information	29
Magic USB MGCOM	29
About the Add-on	29
Requirements and Recommendations	29
Mass Storage 3.0	30
About the Add-on	30
Features	30
Requirements and Recommendations	30
Important Feature Information	30
Media Player 9.0	31
Features	31
Requirements and Recommendations	32
Important Feature Information	32
Microsoft VPN Point-to-Point Tunneling Protocol (PPTP) 1.1	34
MicroTouch 5.6	34
About the Add-on	34
Requirements and Recommendations	35
Important Feature Information	35
Personal Computer/Smart Card (PC/SC) 2.0	35
About the Add-on	35
Features	35
Requirements and Recommendations	36
Important Feature Information	36
Remote Desktop Protocol (RDP) 5.1	37
Features	37
Remote Desktop Protocol (RDP) 5.5	38
Features	38
Remote Shadow 2.0	39
Features	39
Requirements and Recommendations	39
Screen Lock	40
Features	40
Requirements and Recommendations	40
Screen Lock ICA Virtual Channel 2.0	40
Features	40
Requirements and Recommendations	41
Screen Saver	41
Simple Network Management Protocol (SNMP) 2.1	41
Terminal Emulation Client (TEC) 5.0	42
About the Add-on	42
Important Feature Information	42

ThinPrint ICA Virtual Channel 5.5	43
About the Add-on	43
Links to User and Administrator Guides and Services	43
Features	43
Requirements and Recommendations	43
Important Feature Information	44
ThinPrint TCP/IP 5.5	44
About the Add-on	44
Links to User and Administrator Guides and Services	44
Features	44
Requirements and Recommendations	45
Important Feature Information	45
USB Modem	45
About the Add-on	45
Requirements and Recommendations	45
WaveLAN 7.62	46
Features	46
About the Add-on	46
Requirements and Recommendations	46
Wyse Viewers	47
Excel Viewer 1.0	47
Features	47
Requirements and Recommendations	47
Portable Document Format (PDF) Viewer 1.0	48
Links to User and Administrator Guides and Services	48
Features	48
Requirements and Recommendations	48
PowerPoint Viewer 1.0	49
Features	49
Requirements and Recommendations	49
Word Viewer 1.0	50
Features	50
Requirements and Recommendations	50
Wyse Wi-Fi 2.0 B	51
About the Add-on	51
About the adapters	51
Features	51

## List of Figures

1	Control Panel window	4
2	Add-on dialog box - Flash Memory tab	5
3	Software Package Wizard	8
4	Software Package Creation Progress window	9
5	Software Package Creation Progress window	9
6	Software Manager Folders - Tree View	10
7	Software Distribution Wizard	10
8	Software Distribution Wizard - Distribution dialog box	11
9	Setup dialog box	12
10	Discover Monitor window	13
11	Download/Upgrade Firmware dialog box	14
12	Local Firmware Upgrade dialog	15

**List of Tables**

- 1 Add-on support for Winterm™ 3000 Series Thin Clients 18
- 2 Edgeport Supported Devices 24
- 3 Supported Smart Card Vendors and Models 36

---

# 1

## Introduction

Add-ons are feature-specific software components that can be installed on a Winterm™ 3000 Series Thin Client without touching the underlying operating system files located in flash memory.

Add-ons are compatible with specific Winterm™ 3000 Series Thin Client CE versions. Ensure that the Add-on you want to install is compatible with the CE .NET version that you are currently running (for information on Add-on compatibility, refer to “Add-on Bundle for Winterm™ 3000 Series Readme Documentation” on page 17). If the Add-on you want to install is not compatible with the CE .NET version that you are currently running, refer to the upgrading documentation for your CE version.



### Caution

The procedures presented in this document are intended for use by system administrators. Untrained persons should not attempt to use these procedures.

---

## About this Guide

This document is intended for administrators of the Winterm™ 3000 Series Thin Client. It provides instructions on preparing for installing the Add-ons as well as obtaining and verifying the Add-ons for the Winterm™ 3000 Series Thin Client. It also provides detailed procedures for installing and removing the Add-ons. In addition, this guide provides the Add-on Bundle for Winterm™ 3000 Series Readme documentation.

## Organization of this Guide

This guide is organized as follows:

Chapter 2, "Before You Begin Installing the Add-ons," lists the issues you must address before installing an Add-on. It also provides the procedures on obtaining and verifying the Add-ons.

Chapter 3, "Installing and Removing the Add-ons," provides detailed procedures on installing and removing the Add-ons.

Chapter 4, "Add-on Bundle for Winterm™ 3000 Series Readme Documentation," provides detailed information on the Add-on Bundle for Winterm™ 3000 Series Thin Clients.

---

## Wyse Technical Support

To access Wyse technical resources, visit [AskWyse.com](http://AskWyse.com). If you still have questions, you can submit your questions using the Wyse [Support Request Form](#), or call Customer Support at 1-800-800-WYSE (toll free in U.S. and Canada). Hours of operation are from 7:00 am to 7:00 pm CST, Monday through Friday.

To access international support, visit <http://www.wyse.com/worldwide>.

### Links to User and Administrator Guides and Services

If you need to upgrade your CE .NET operating system, contact Wyse customer Support at: <http://www.wyse.com/serviceandsupport>.

The *Winterm™ 3000 Series Users and Administrators Guide* is available for download from the Wyse Products Quick Reference site at: <http://www.wyse.com/products/winterm/quickstart/3000.htm>.

The guide explains how to use and administer the Winterm™ 3000 Series Thin Clients. It covers the following topics:

- **Regulatory Notices** - Copyright, software license, and FCC notices and statements.
- **Introduction** - General information about the CE .NET-based Thin Clients powered by Microsoft Windows CE .NET®, references to online resources, and terms and conventions.
- **User Instructions** - Thin Client login, shut down, and functions available to user and guest level operators.
- **Administrator Instructions** - Server environment, initial Thin Client setup, administrator settings, and remote administration and software upgrades.



# 2

## Before You Begin Installing the Add-ons

This chapter lists the issues you must address before installing the Add-ons. It also provides the procedures on obtaining and verifying an Add-on.

---

### Preparing for Installation

Before you begin installing an Add-on, be sure that you have addressed the following:

- The Add-on procedures work only for Winterm™ 3000 Series Thin Clients with firmware version 4.0 or later. If your Thin Client has an older version of firmware, you must first upgrade to version 4.0 or later.
- Ensure that your Thin Client will have at least 200 kB of flash memory free *after* the Add-on is installed. To determine free flash memory, refer to “Determining the Amount of Free Flash Memory” on page 4.
- If there is insufficient free flash memory available, you may choose to remove existing Add-ons (including those that may have been installed by the factory or bundled with a firmware upgrade) to make room for others (available from Wyse Technology) to be installed.
- Replacing an Add-on with one of the same type but from an older software build will cause user settings specific to the Add-on to be lost.
- If you install an Add-on and later downgrade installed firmware, and if the Add-on is not bundled with the downgrade image, it will be lost.

## Determining the Amount of Free Flash Memory

The amount of flash memory currently free is shown in the Flash Memory tab of the Add-on dialog box.

To determine the amount of free flash memory, complete the following procedures:

1. Log on to the Thin Client as administrator.
2. Click **Start | Settings | Control Panel** to open the Control Panel window (see Figure 1).



### Note

If you are not using the New Desktop option, you can open the Control Panel window by clicking the Control Panel command button in the Connection Manager.

Figure 1 Control Panel window



3. Double-click the **Add-on** icon to open the Add-on dialog box.

4. Click the **Flash Memory** tab to view the total and free amounts of flash memory (see Figure 2).

**Figure 2 Add-on dialog box - Flash Memory tab**



---

## Obtaining an Add-on Package from Wyse Technology

For availability, pricing, and ordering information in the United States and Canada, call 1-800-GET-WYSE (1-800-438-9973) or visit us at <http://www.wyse.com>. In all other countries, contact your Wyse sales representative.

### Verifying an Add-on Package Contents

Generally, an Add-on package is downloaded from Wyse in self-extracting compressed (.exe) format. It is recommended that you extract it into its own folder and verify that it contains four Rapport scripts. Two scripts are for the installation of the Add-on, and two scripts are for the removal of the Add-on.



#### Note

The Add-on package may be extracted to a shared folder but the sub-folder must be present in this folder.

The Add-on package content is as follows:

## Installation Files

Installation files include the following:

- `ADDON_<ADD-ON NAME>_BXXXX.RSP`  
(This script is used for all non CE .NET products - OS version earlier than 4.0 - on Rapport 3.0 or 4.0.)
- `ADDON_<ADD-ON NAME>_BXXXX_CEN.RSP`  
(This script is used for all CE .NET products - OS version 4.0 or later - on Rapport 4.0.)
- Two sub-folders, each containing the following:
  - `<add-on image file name>.bin`
  - `params.ini`  
(This is the initialization file associated with the binary file. It cannot be used with other Add-ons.)
  - `bootstrap212.exe`  
(This bootstrap file is needed for installing Add-ons to Model 3350SE Thin Clients using RA3000 or FTP pull only, and may not be present in all Add-on packages.)

## Removal Files

Removal files include the following:

- `RM_ADDON_<ADD-ON NAME>_BXXXX.RSP`  
(This script is used for all non CE .NET products - OS version earlier than 4.0 - on Rapport 3.0 or 4.0.)
- `RM_ADDON_<ADD-ON NAME>_BXXXX_CEN.RSP`  
(This script is used for all CE .NET products - OS version 4.0 or later - on Rapport 4.0.)
- Two sub-folders, each containing the following:
  - `Z.TXT`  
(This is a place holder for the extraction package.)



### Note

It is necessary to include an empty text file (`Z.txt`) in the sub-folder so that the sub-folder extracts. This file may be deleted after extraction; however, no harm will be done if the file remains.

---

# 3

## Installing and Removing the Add-ons

This chapter provides detailed procedures on installing and removing the Add-ons for the Winterm™ 3000 Series Thin Client using the following options:

- “Installing an Add-on Using Rapport Administrative Software” on page 7
- “Installing an Add-on Using Remote Administrator 3000 (RA3000)” on page 11
- “Installing an Add-on Using FTP Pull” on page 15
- “Removing an Add-on Using Local Controls” on page 16
- “Removing an Add-on Using Rapport Administrative Software” on page 16



### Caution

Use only the methods outlined in this guide. There are two file transfer procedures that, if used to attempt to load Add-ons, could overwrite flash memory and render the Winterm inoperable. They are: **xfer** (parallel download using a LapLink® cable) and **pccard** (PCMCIA flash card).



### Note

Installation of Add-ons using DHCP automatic upgrade is not supported.

---

## Installing an Add-on Using Rapport Administrative Software

Rapport Administrative Software™ is a full-featured remote administration tool available from Wyse Technology. It provides the ability to install additional applications on one or more Thin Clients by dragging and dropping the software into a repository from which it can be distributed to selected Thin Clients. In most cases it will be the best means of installing Add-ons.



### Note

This procedure assumes that Rapport has already been configured for operation in your network environment. For information about obtaining Rapport contact your Wyse sales representative. For specific information on using Rapport and creating scripts, consult the Rapport documentation.

## Registering an Add-on Package in the Software Repository

The Add-on package must be registered in the Rapport Software Repository before you can update your Thin Clients.

To register an Add-on package, complete the following procedures:

**Note**

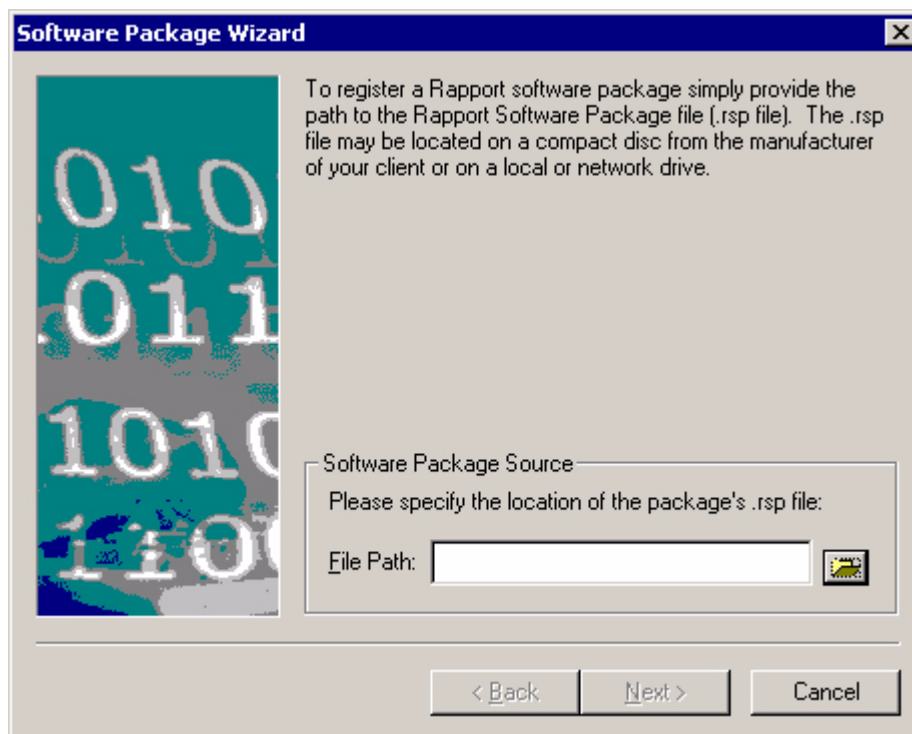
When using Rapport 4.0 **Software Manager** is named **Package Manager**, and **Client Manager** is named **Device Manager**.

1. Launch Rapport.
2. In the tree view of Rapport, right-click **Software Manager** and select **New | Software Package** to start the Software Package Wizard (see Figure 3).

**Note**

When using Rapport 4.0, an additional Package Wizard dialog box appears; select the **Register Package from Script File (.RSP)** radio button and click **Next**.

**Figure 3 Software Package Wizard**



3. Type the path to the location of the Add-on script (\*.rsp) or click the browse icon to locate the Add-on script (If located using the browse feature, select the Add-on script name in the Open dialog box and click **Open**).

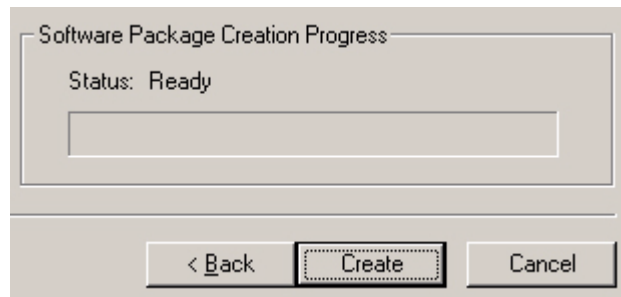
**Note**

Scripts were created to accommodate Rapport version 4.0 and later while installing Firmware onto Winterm™ 3000 Thin Clients with versions 2.12, 4.x (CE .NET), and 5.0 (CE) installed. These scripts are denoted with `cen` in the script's filename.

4. Click **Next** in the Software Package Wizard to display of the software package information.
5. Click **Next** to move the software to a directory in the Software Manager.

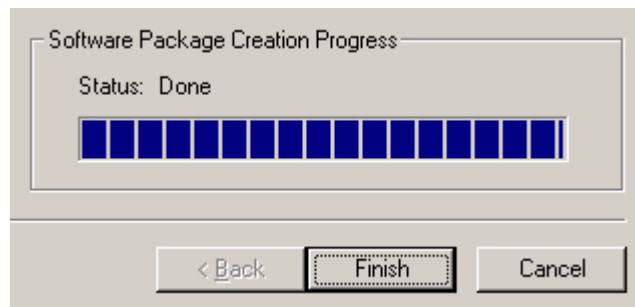
The Wizard will inform you that Rapport is ready to create the software package and prompts you to click **Create** to begin the process (see Figure 4).

**Figure 4 Software Package Creation Progress window**



6. When the status in the Wizard indicates **Done** (see Figure 5), click **Finish** to complete the process.

**Figure 5 Software Package Creation Progress window**



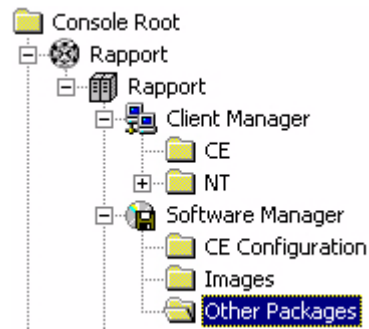
## Distributing an Add-on Package

Rapport provides a drag-and-drop mechanism for distributing software to Thin Clients.

To distribute an Add-on package, complete the following procedures:

1. In the tree view under Software Manager, select the directory containing the Add-on software package as shown in Figure 6.

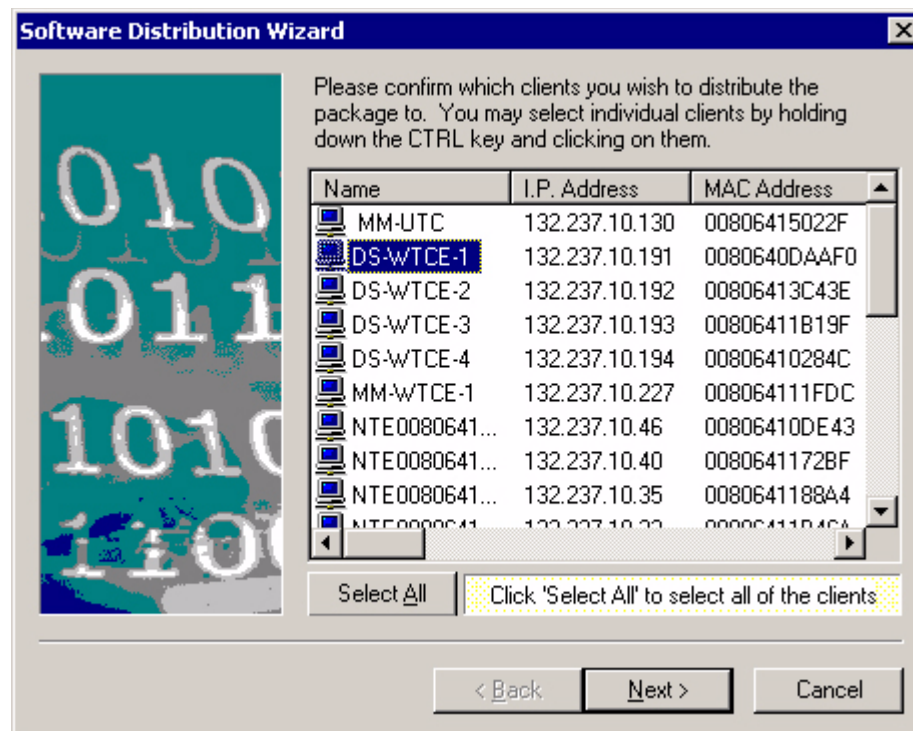
**Figure 6 Software Manager Folders - Tree View**



2. In the contents window of the selected folder, drag the desired Add-on software package to the Client Manager icon or the group under the Client Manager that contains the target Thin Clients.

The Software Distribution Wizard dialog box appears as shown in Figure 7 (depending on the Rapport version, the dialog box appears slightly different).

**Figure 7 Software Distribution Wizard**

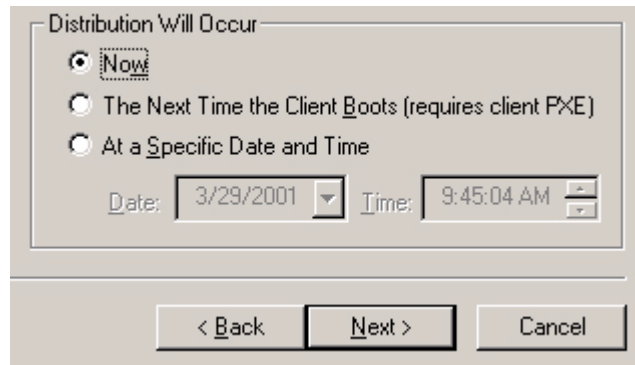


3. Select the Thin Clients to which you wish to distribute the software and click **Next**.  
For multiple Thin Clients hold down the **Ctrl** key and click the selections.
4. In the Distribution dialog box (see Figure 8), select **Now** or **At a Specific Date and Time** (if the latter is selected, configure the Date and Time text boxes).

**Note**

The **Next Time the Client Boots** should not be selected.

**Figure 8 Software Distribution Wizard - Distribution dialog box**



5. Click **Next**.
6. In the Update Creation Progress dialog box, complete the update process by clicking **Create**.
7. Click **Finish** to complete the distribution.

---

## Installing an Add-on Using Remote Administrator 3000 (RA3000)

RA3000 is a remote administration tool available from Wyse Technology. For information about obtaining RA3000, contact your Wyse sales representative.

**Note**

This procedure assumes that RA3000 is already configured for operation in your network environment. For specific information on using RA3000, consult the users guide.

This procedure is not supported for the CE .NET operating system.

RA3000 uses an FTP server as an intermediary to deliver Add-on files to Winterm™ 3000 Series Thin Clients. The Add-on files themselves may be stored locally or on another server.

To install an Add-on package, complete the following procedures:

1. Obtain the Add-on binary image (.bin) and associated parameters initialization file (params.ini) and bootstrap file (bootstrap212.exe) from Wyse Technology and place them all in a directory that can be accessed by the remote administration tool.

2. Launch RA3000 and click **Utilities | Setup** to open the Setup dialog box (see Figure 9).

**Figure 9 Setup dialog box**

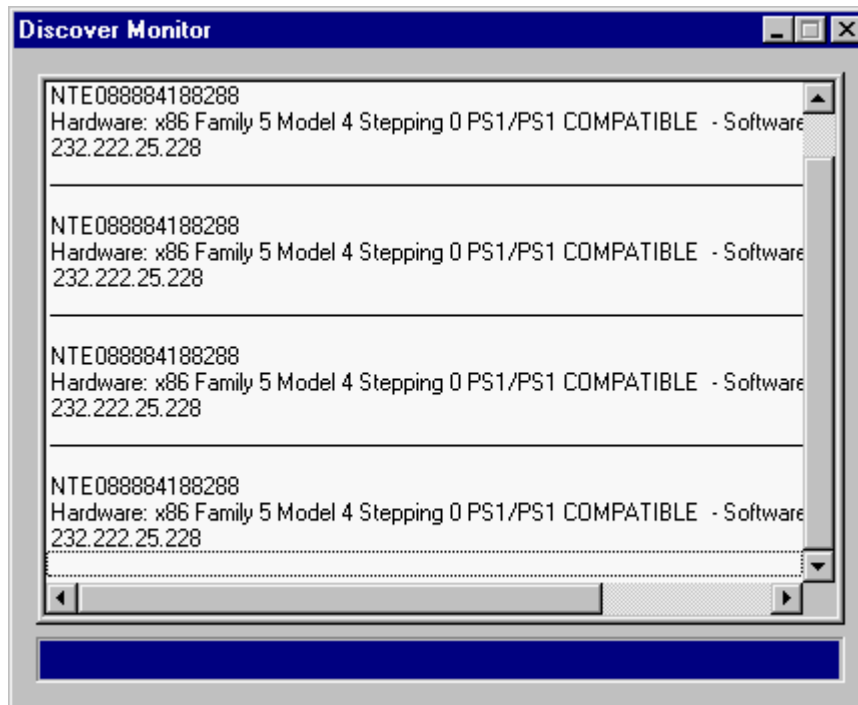
3. In the FTP Server Name or IP Address text box, enter the DNS name or IP address of the FTP server that will be used to deliver the Add-on files to the Thin Clients.
4. In the FTP Server Path text box, enter the root path to a directory on the FTP server that will be used as a temporary holding area for the Add-on files that are to be delivered to the Thin Clients.

If no entry is made, the FTP root (a configuration at the FTP server side) is used. The FTP root refers to the root directory that the FTP server administrator assigns to a logged-in FTP user. Users that log-in to different FTP accounts may be assigned to different root directories.

5. Enter the FTP server permission data in the FTP Server Login and FTP Server Password text boxes.

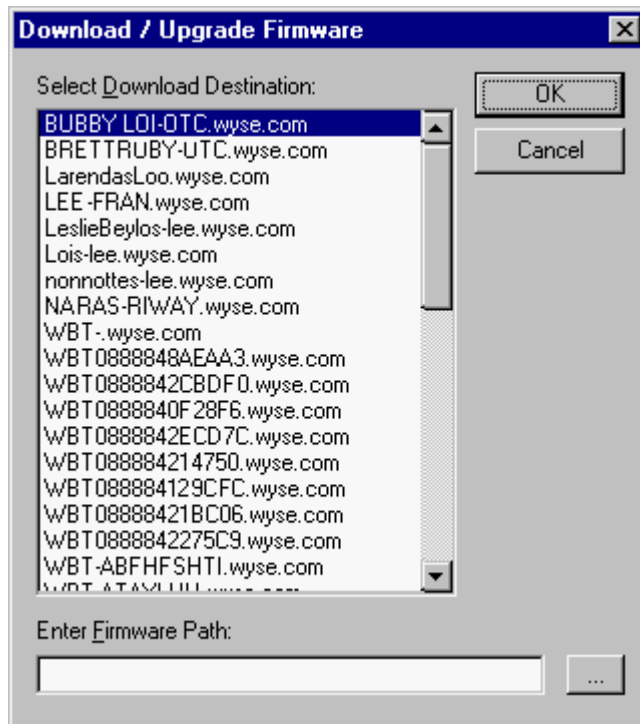
6. Click **OK** to close the Setup dialog box.
7. Click **Utilities** | **Discover** to generate a list of all Thin Clients on the network (see Figure 10).

**Figure 10 Discover Monitor window**



8. Click **Utilities | Upload/Download | Download Firmware** to open the Download/Upgrade Firmware dialog box (see Figure 11).

**Figure 11** Download/Upgrade Firmware dialog box



9. Type the path or browse to the location of the Add-on files (determined in step 1).  
The discovered Thin Clients (found in step 7) are listed in the Select Download Destination list box.
10. Select the Thin Clients to which you want the Add-on sent.  
For multiple Thin Clients, hold down the **Ctrl** key and click the selections.
11. Click **OK** to start the download process.

## Installing an Add-on Using FTP Pull

FTP Pull is a procedure performed locally at the Thin Client using the Local Firmware Upgrade dialog box.

To install an Add-on package, complete the following procedures:

1. Obtain the Add-on binary image (.bin) and associated parameters initialization file (params.ini) and bootstrap file (bootstrap212.exe) from Wyse Technology and place them all in a directory in the FTP root of an FTP server to which you have access permission.
2. Log on to the Thin Client as administrator.
3. Double-click the Upgrade icon in the Control Panel.
4. Click the **Local** tab to view the Local Firmware Upgrade dialog (see Figure 12).

**Figure 12** Local Firmware Upgrade dialog



5. Select **Use Local FTP Information** and enter the location of the Add-on files in the Server Name and Server Directory text boxes.
6. Enter the required FTP server login information in the User ID and Password text boxes.
7. Click **Upgrade** to start the transfer of the Add-on files to the Thin Client.

Informative messages are displayed in the Status text box during the transfer. When the process completes, the Thin Client is automatically rebooted. For more information, refer to the *Winterm™ 3000 Series Users and Administrators Guide*.

---

## Removing an Add-on

An Add-on may be removed locally by using controls available on the Thin Client or remotely by using Rapport Administrative Software™.

### Removing an Add-on Using Local Controls

An Add-on may be removed from the Thin Client by using the **Add-on** dialog box.

To remove an Add-on package, complete the following procedures:

1. Log on to the Thin Client as administrator.
2. Double-click the **Add-on** icon to open the Add-on dialog box.
3. Click the **Add/Remove** tab to view the list of Add-ons.
4. Select the name of the Add-on you want to remove and click **Remove** to open a prompt that allows you to confirm the decision and start the removal process.

**Note**

Add-ons can only be removed one at a time.

### Removing an Add-on Using Rapport Administrative Software

Rapport Administrative Software™ can be used to remove Add-ons using scripts similar to the installation Add-on scripts. Ready-to-use removal scripts are included in the same Add-on packages containing the installation scripts. For information on the removal files, refer to “Verifying an Add-on Package Contents” on page 5.



# 4

## Add-on Bundle for Winterm™ 3000 Series Readme Documentation

This chapter provides detailed information on the Add-on Bundle for Winterm™ 3000 Series Thin Clients.

---

### Overview

Thank you for downloading the Add-on Bundle for Winterm™ 3000 Series Thin Clients. This Add-on software release for the Winterm™ 3000 Series uses the CE .NET 4.0 operating system or later.

Before you install the Add-on Bundle for Winterm™ 3000 Series Thin Clients, ensure that the CE .NET version that you are currently running is CE .NET version 4.0 or later. In addition, refer to Table 1 “Add-on support for Winterm™ 3000 Series Thin Clients” to ensure that the Add-on you want to install is compatible with the CE .NET version that you are currently running (required Add-on build numbers are listed under each version). If the Add-on you want to install is not compatible with the CE .NET version that you are currently running, refer to the upgrade documentation for your CE .NET version.

Detailed information for each of the Add-ons in this bundle are found in the sections of this chapter that pertain to that Add-on.

## About the Add-on Bundle

Winterm™ 3000 Series Thin Client Add-ons are shown in Table 1 (for additional Add-on information, click on the name of the Add-on):

**Table 1 Add-on support for Winterm™ 3000 Series Thin Clients**

Add-on	Version 4.0/ Add-on Build	Version 4.1/ Add-on Build	Version 4.2/ Add-on Build	Version 5.0/ Add-on Build
"Aironet Wireless 2.3" on page 20	11.4	15.1	15.5	N/A
"AutoPower 1.0" on page 22	1	1	1	1
"BootP 2.01" on page 23	4	4	4	N/A
"Certificates 1.0" on page 23	7	7	7	7
"DialUp 2.1" on page 23				15
"Edgeport" on page 23	11	11	11	11
"ELO Touch Screen" on page 25 (Serial)	11	11	11	11
"ELO Touch Screen" on page 25 (USB)			3	3
"Independent Computing Architecture (ICA) 8.01" on page 26	60	60	60	60
"Internet Explorer 6.0" on page 27			27	32
"JETCET PRINT Professional 3.01" on page 28	23	23	23	23
Languages "French Language" on page 28				3
Languages "German Language" on page 28				3
Languages "Spanish (Traditional) Language" on page 28				3
"Magic USB MGC0M" on page 29	11	11	12	12
"Mass Storage 3.0" on page 30				15
"Media Player 9.0" on page 31			13	16
"Microsoft VPN Point-to-Point Tunneling Protocol (PPTP) 1.1" on page 34				11
"MicroTouch 5.6" on page 34			7	7
"Personal Computer/Smart Card (PC/ SC) 2.0" on page 35	10	10	13	13

**Table 1 Add-on support for Winterm™ 3000 Series Thin Clients, Continued**

<b>Add-on</b>	<b>Version 4.0/ Add-on Build</b>	<b>Version 4.1/ Add-on Build</b>	<b>Version 4.2/ Add-on Build</b>	<b>Version 5.0/ Add-on Build</b>
“Remote Desktop Protocol (RDP) 5.1” on page 37	12.3	18.2	26.1	N/A
“Remote Desktop Protocol (RDP) 5.5” on page 38				32
“Remote Shadow 2.0” on page 39	17	17	17	17
“Screen Lock” on page 40	13	13	13	13
“Screen Lock ICA Virtual Channel 2.0” on page 40	2	2	2	2
“Screen Saver” on page 41	7	7	7	7
“Simple Network Management Protocol (SNMP) 2.1” on page 41				24
“Terminal Emulation Client (TEC) 5.0” on page 42	92	92	92	92
“ThinPrint ICA Virtual Channel 5.5” on page 43	13	13	13	13
“ThinPrint TCP/IP 5.5” on page 44	10	10	10	10
“USB Modem” on page 45	5	5	5	5
“WaveLAN 7.62” on page 46	7	7	7	N/A
Wyse Viewers - “Excel Viewer 1.0” on page 47			2	2
Wyse Viewers - “Portable Document Format (PDF) Viewer 1.0” on page 48	2	2	2	2
Wyse Viewers - “PowerPoint Viewer 1.0” on page 49			2	2
Wyse Viewers - “Word Viewer 1.0” on page 50			2	2
“Wyse Wi-Fi 2.0 B” on page 51	15	15	15	15

---

## Aironet Wireless 2.3

Wyse Aironet Wireless 2.3 uses the CE .NET 4.x operating system (Aironet Wireless 2.3 builds 15.2 or later run on CE .NET 4.2). Before you install Aironet Wireless, ensure that the CE .NET version that you are currently running is CE .NET version 4.2.

**Note**

Wyse Aironet Wireless 2.3 builds for CE .NET 4.0, CE .NET 4.1 and CE .NET 4.2 are NOT binary compatible - that is the data files are not exactly the same.

Aironet Wireless provides the following support to the Aironet PCMCIA and PCI adapters:

- Driver support to enable the Aironet adapters
- A user interface (Cisco Aironet Wireless Setup Control Panel Applet) to access several client utilities that interact with the driver to adjust client adapter settings and display information about the adapter
- A dialog box (Wireless Login Module) to allow user input for LEAP credentials
- A utility (Load New Firmware) to facilitate updates of adapter firmware

### About the Add-on

Supported H/W:

- Cisco Aironet 340/350 Series PCMCIA Wireless Card
- Cisco Aironet 350 Series PCI Wireless Card

Known Issues and Workarounds:

- Adapter fails to establish connection using MIC (Message Integrity Check) security with static WEP key.
- Downgrading Add-on causes old Aironet applet to be displayed. As a workaround, first remove current Aironet Add-on and then downgrade to previous build.

### About the Adapters

The Cisco Aironet 340 and 350 Series PCMCIA Wireless Adapter (AIR-PCM342 and AIR-PCM352) provides wireless LAN function in a PC Card (PCMCIA) form factor. The Cisco Aironet 350 Series PCI Wireless Adapter (AIR-PCI352) provides wireless LAN function in a PCI form factor. The wireless LAN function is compliant with the IEEE802.11b standard with data rates up to 11Mbps.

### Features

Wyse Aironet Wireless includes the following features:

- New driver - Cisco Aironet driver version 2.20
- Static WEP encryption support
- 802.1X LEAP (EAP Cisco Wireless) authentication support
- Message Integrity Check (MIC) security feature support
- Cisco Temporal Key Integrity Protocol (CKIP) security feature support
- Broadcast Key Rotation security feature support
- Load New Firmware (LNF) utility - The LNF utility facilitates updates of Aironet adapter firmware (for 340 and 350 cards)

## Requirements and Recommendations

Wyse Aironet Wireless requirements and recommendations include the following (different versions of a security feature require different versions of adapter firmware):

- Requires Winterm Model 3360SE or Model 3455XL with optional PCI to PCMCIA card to use the Aironet PCMCIA adapter.
- Requires Winterm Model 3455XL with available PCI slot to use the Aironet PCI adapter.
- LEAP (802.1X Draft 8) security feature - Requires adapter firmware version 4.13, 4.16 or 4.23.
- LEAP (802.1X Draft 10) security feature - Requires adapter firmware version 4.25 or later. (The functionality in draft 10 is equivalent to the functionality in draft 11, the ratified draft of the 802.1X standard.)
- MIC security feature - Requires adapter firmware version 4.23 or later. This feature is supported automatically and does not need to be enabled on the adapter.
- CKIP security feature - Requires adapter firmware version 4.23 or later. This feature is supported automatically and does not need to be enabled on the adapter.
- Broadcast Key Rotation Require adapter firmware version 4.23 or later. This feature is supported automatically and does not need to be enabled on the adapter.

## Important Feature Information

This section provides important information on the following features:

- Static WEP encryption support
- 802.1X LEAP (EAP Cisco Wireless) authentication support
- Load New Firmware (LNF) utility

### Static WEP encryption support

For 64 or 128-bit WEP keys - With the Aironet Add-on, WEP keys saved in the Aironet adapter's non-volatile memory will NOT be used. To use WEP encryption, administrators must enter the WEP key at least once from the Cisco Aironet Wireless Setup - WEP Configuration dialog screen. The newly entered WEP key will then be saved in the Thin Client's permanent storage and will be available for any Aironet adapter that is plugged into the Thin Client.

### 802.1X LEAP (EAP Cisco Wireless) authentication support

Automatic LEAP Login - By default, LEAP credentials are saved in the Thin Client's volatile storage only. The username and password remain on the client adapter until power is removed from the adapter (typically due to the Aironet adapter being ejected or the system powering down). Therefore, the user has to enter a username and password every time the system is restarted.

A user option to save LEAP credentials in the Thin Client's permanent storage is provided. When this option is enabled, LEAP credentials saved in the Thin Client's permanent storage are used for LEAP authentication.

To minimize compromises in security:

- If the Automatic LEAP Login setting is NOT enabled (default) when LEAP credentials are entered through the Wireless Login Module, LEAP credentials will NOT be saved in Thin Client's permanent storage. Therefore, if a user enables the Automatic LEAP

Login setting, LEAP credentials must be entered at least once before they can be used for automatic LEAP login.

- When the Automatic LEAP Login setting is changed from enabled to disabled, LEAP credentials previously saved in the Thin Client's permanent storage will be deleted.

### **Load New Firmware (LNF) utility**

LNF facilitates updates of Aironet adapter firmware and works in conjunction with the Aironet FW Add-on. Be aware of the following:

- The firmware image must be in the Winterm™ 3000 Series Add-on bundled format released by Wyse Technology.
- It is recommended that you install the Aironet FW Add-on either automatically through Rapport or manually through Add-on Installation from the Thin Client.
- Do not install the Aironet FW Add-on through a DHCP automatic upgrade.
- Once the firmware image is used to upgrade the Aironet adapter successfully, the corresponding Aironet FW Add-on will be removed from the Thin Client automatically.

Depending on user settings, firmware upgrades can be done manually or automatically:

- For manual firmware upgrades, users can click Load New Firmware in the Cisco Aironet Wireless setup.
- For automatic firmware upgrades complete the following procedures:
  - a. Ensure that the Automatic Load New Firmware setting found in the Cisco Aironet Wireless Setup - Client Configuration dialog box is enabled (default).
  - b. Install the desired Aironet FW Add-on either automatically through Rapport or manually through Add-on Installation from the Thin Client.
  - c. Restart the Thin Client with the Aironet adapter plugged in.
  - d. New firmware loads to the Aironet adapter after the Thin Client reboots (when the Aironet driver is loaded).

---

## **AutoPower 1.0**

Wyse AutoPower 1.0 allows Winterm™ 3000 Series Thin Clients to automatically boot to CE .NET without having to use the Thin Client power button. This Add-on was designed for customers who installed their Thin Client in such a way that the power button is inaccessible to the end user (as the Thin Client would be rendered inoperable if the Thin Client was ever to lose power in such cases as power-outages and so on).

By installing this Add-on, whenever the Winterm™ 3000 Thin Client is physically removed from a power source (for example pulling the cord from the wall) and the power source is reapplied (Cold Boot), the Thin Client will automatically boot to CE .NET without having to use the Thin Client power button.

Wyse AutoPower also changes the existing Shut Down mechanism and Power Button feature of CE .NET so that the Thin Client never turns off. Therefore, using the Shut Down command button in the Connection Manager or using the Thin Client Power Button while in CE .NET restarts the Thin Client.

---

## BootP 2.01

Wyse Bootstrap Protocol (BOOTP) 2.01 is a UDP/IP-based protocol which allows a booting host to configure itself dynamically and without user supervision. BOOTP provides a means to notify a host of its assigned IP address, the IP address of a boot server host, and the name of a file to be loaded into memory and executed. Other configuration information such as the local subnet mask, the local time offset, the addresses of default routers, and the addresses of various Internet servers can also be communicated to a host using BOOTP. Wyse BOOTP is provided as an Add-on package to support customer network environments which have a BOOTP server installed and do not communicate with a DHCP client.

---

## Certificates 1.0

Wyse Certificates 1.0 allows Winterm™ 3000 Series Thin Client administrators to import and remove digital certificates, as well as view the details of installed digital certificates. This Add-on supports X.509 certificate structure and standard ASN.1 encoding.

A user interface is provided for administrators to manually download new custom digital certificates through FTP into the Thin Client. The digital certificates are installed in the Thin Client using Microsoft standard certificate APIs. As the digital certificate is installed, a copy is saved in the registry, and another copy is saved as a file on Flash to ensure functionality. With proper registry settings, certificates that reside in Flash can be imported into the certificate store automatically during boot up. In addition, the digital certificates can be used through the virtual channels of both ICA and RDP sessions.

---

## DialUp 2.1

Wyse DialUp 2.1 allows Winterm™ 3000 Series Thin Client users to configure a new dial-up connection, or edit an existing connection, using the Dial-Up Configuration Wizard.

---

## Edgeport

Wyse Edgeport allows USB-to-Serial/Modem and USB-to-Parallel solutions for Input/Output (I/O) port expansion in Winterm™ 3000 Series Thin Clients. The Edgeport external device connects to a USB port of the Thin Client and allows you to configure the USB-Serial port(s) as direct COM port(s) or modem port(s) using the Edgeport dialog. You can also configure the USB-Serial port(s) settings from the Port dialog box.

**Note**

Edgeport registry settings are lost after upgrading from CE 4.0 or 4.1 to 4.2.

### About the Add-on

Edgeport Serial Driver Version: 2.9.4.0

Edgeport Parallel Driver Version: 2.0.0.1

## Requirements and Recommendations

Wyse Edgeport requires a Winterm™ 3000 Series Thin Client with at least one available USB port.

### Important Feature Information

Although the Edgeport/21 is recommended, Wyse Edgeport supports the following devices shown in Table 2:

**Table 2 Edgeport Supported Devices**

Product	Part Number	Description	Ports	Connectors
<b>Edgeport Standard Serial Converters</b>				
Edgeport/1	301-1001-11	USB to 1 port RS-232 Serial	1 Serial	DB-9
Edgeport/1 with 2M Captive Cable	301-1001-15	USB to 1 port RS-232 Serial	1 Serial	DB-9
Edgeport/2	301-1000-02	USB to 2 port RS-232 Serial	2 Serial	DB-9
Edgeport/4	301-1000-04	USB to 4 port RS-232 Serial	4 Serial	DB-9
Edgeport/8	301-1002-08	USB to 8 port RS-232 Serial	8 Serial	DB-9
Edgeport/8r	301-1002-14	USB to 8 port RS-232 Serial	8 Serial	RJ-45
Edgeport/8/DB-25	301-1016-08	USB to 8 port RS-232 Serial	8 Serial	DB-25
Edgeport/4/DB-25	301-1016-01	USB to 4 port RS-232 Serial	4 Serial	DB-25
<b>Edgeport in Metal Chassis</b>				
Edgeport/2m	301-1000-80	USB to 2 port RS-232 Serial	2 Serial	DB-9
Edgeport/4m	301-1000-81	USB to 4 port RS-232 Serial	4 Serial	DB-9
<b>Edgeport Multi-Interface Converters</b>				
Edgeport/421	301-1004-21, International 301-2004-21	USB to 4 USB, 2 port RS-232 Serial, 1 Parallel	2 Serial, 4 USB, 1 Parallel	DB-9, USB, DB-25
Edgeport/21 <sup>1</sup>	301-1000-21	USB to 2 port RS-232 Serial, 1 Parallel	2 Serial, 1 Parallel	DB-9, DB-25

1. Recommended

---

## ELO Touch Screen

Wyse ELO Touch Screen allows Winterm™ 3000 Series Thin Client users to make a selection by touching the monitor screen, rather than typing on a keyboard or pointing with a mouse. After a touch screen is attached through a standard USB or Serial port, you can configure and calibrate the touch screen by using the Touch Screen icon in the Control Panel.

**Note**

Wyse ELO Touch Screen builds for CE .NET 4.0, 4.1, 4.2, and CE 5.0 are NOT binary compatible (the data files are not exactly the same).

**Note**

On CE .NET 4.2, Wyse ELO Touch Serial is incompatible with MicroTouch. Ensure that the MicroTouch Add-on is removed *before* installing ELO Touch Serial. Installing both Add-ons causes unpredictable malfunctions.

## Features

Wyse ELO Touch Screen USB supports the following devices:

- All ELO Touch USB models
- CarrollTouch Infrared (all 4000 series controllers)

## Requirements and Recommendations

Wyse ELO Touch Screen requirements and recommendations include the following:

- Winterm™ 3000 Series Thin Client with at least one available USB or Serial port.
- ELO Touch Screen monitor.
- Some Touch screen add-ons, including EloTouch, EloTouchUSB, EloTouchUSB410, and the MicroTouch Add-on are not compatible. It is recommended that before installing a Touch screen add-on, you uninstall all existing Touch screen add-ons from the Thin Client. With CE 4.1 and later, the removal and installation of add-ons can be done without rebooting. You do not need to uninstall existing Touch screen add-ons when performing an upgrade on that add-on.

## Important Feature Information

Wyse ELO Touch Screen USB supports CarrollTouch Infrared (all 4000 series controllers) and all ELO Touch USB models including the following devices:

- ELO LCD Desktop 15 inch Touchmonitor (XGA TFT color display)
- ELO Entuitive 15 inch Touchmonitor with AccuTouch Five-Wire Technology (ET1525C-7UWD-1)
- ELO Entuitive 15 inch Touchmonitor with IntelliTouch Surface Wave Technology (ETC1525C-8UWD-1)

---

## Independent Computing Architecture (ICA) 8.01

Citrix® Independent Computing Architecture (ICA)® 8.01 allows Winterm™ 3000 Series Thin Client users to connect remotely to servers running Citrix MetaFrame. ICA Client offers quick, secure access to applications, content, and entire desktops published on servers running MetaFrame. ICA separates the user interface from the application while keeping the logic on the server. By doing this, only screen updates, mouse clicks and keystrokes traverse the connection media.

Winterm™ 3000 Series Thin Clients provide support of ICA technology through the ICA Add-on. CE .NET 4.0 and 4.1 releases support ICA client version 6.3. The CE .NET 4.2 release supports ICA client version 7.1. The CE 5.0 release supports ICA client version 8.0. Administrators can create, edit, launch and delete an ICA connection in different ways depending on the desktop settings.

### About the Add-on

Citrix version: 8.04

Citrix build: 28357

### Features

Citrix® Independent Computing Architecture (ICA)® protocol includes the following features:

- Program Neighborhood (PN) Agent Interface
- Content Publishing
- Browser Acceleration
- NTLM Proxy Authentication
- Auto Client Reconnect
- Roaming User Reconnect
- Parameter Passing
- Smart Card Authentication
- NDS Credentials
- SSL (including DNS resolution)
- TLS
- SOCKS 4 and 5 Support
- Secure Proxy
- Time Zone Support
- Virtual Channel SDK
- Client Device Mapping (Printers, COM ports, Audio (server to client), clipboard)
- Basic Functionality (1280x1024 resolution, memory and persistent cache, international keyboard support, TCP/HTTP Browsing, Disconnect/Reconnect, NDS Credential support, up to 128-bit encryption)



#### Note

Much of the desktop features described in this section are not available when the ICA Add-on is installed on a CE .NET version earlier than 4.2.

**Note**

PNLite registry settings are lost after upgrading from CE .NET 4.0 or 4.1 to 4.20.

---

## Internet Explorer 6.0

Wyse Microsoft® Internet Explorer 6.0 for Microsoft® Windows® CE is a highly compatible, feature-rich browser. Web developers, OEMs, independent software vendors (ISVs), and independent hardware vendors (IHVs) can use the technologies provided by IE 6.0 for Windows CE to build a custom browser for a specific device or market.

IE 6.0 also includes the following features for Winterm™ 3000 Series Thin Client CE software release version 5.0:

- Localization of GUI in French, German, and European Spanish (provided in separate Add-ons)
- Pop-up window blocking support
- Remote Procedure Call (RPC) support for proper Web-site rendering
- Privacy Preferences platform to display Web-sites with a P3P policy
- Support for various IE theme controls
- Enhanced filters and transitions to improve user experience and presentation of Web content

## Features

Wyse IE 6.0 for Windows CE supports the same features as the Microsoft Win32® version of Internet Explorer 6.0, except for the following:

- Downloadable Microsoft ActiveX® controls
- Gopher protocol
- Recreation Software Advisory Council on the Internet (RSACi) rating system
- Filters and transitions
- Default behaviors other than client capabilities

A platform that includes IE 6.0 for Windows CE also includes support for the following features:

- Windows Internet Services (WinInet), including FTP protocol support, Transport Layer Security (TLS) 1.0, Secure Sockets Layer (SSL) versions 2.0 and 3.0, Server Gated Crypto (SGC) security protocols
- MSHTML and DHTML API and Document Object Model
- Web Browser Control Host
- Microsoft JScript® 5.5 run-time engine
- Microsoft Visual Basic Scripting Edition (VBScript) 5.5 run-time engine

## Languages

Wyse Languages allows Winterm™ 3000 Series Thin Client users to change the language of the User Interface (UI).

Wyse Languages are sold separately and include:

- French Language
- German Language
- Spanish (Traditional) Language

### French Language

Wyse French Language allows an end user working with an English UI to change the language of the UI to French.

### German Language

Wyse German Language allows an end user working with an English UI to change the language of the UI to German.

### Spanish (Traditional) Language

Wyse Spanish (Traditional) Language allows an end user working with an English UI to change the language of the UI to Spanish (Traditional).

---

## JETCET PRINT Professional 3.01

Wyse JETCET PRINT Professional 3.01 is a utility that supports local printing from your Winterm™ 3000 Series Thin Client.

### Features

Wyse JETCET PRINT Professional includes the following features:

- USB printer support - Supports several printers through USB (for a list of supported printers, refer to Important Feature Information).
- Enabled for USB to Parallel Converter Cable with ICA and RDP.
- Industry Standard Language support - Supports Epson ESC/P, ESC/P2, and compatible devices; Hewlett-Packard PCL3 and compatible devices; PostScript Level 2 and compatible devices.
- Internet Printing Protocol (IPP) support - Supports IPP, an Internet protocol that allows users to print documents from the Internet. The protocol allows the user to: find out about a printer's capabilities, submit print jobs to a printer, find out the status of a printer or a print job, and cancel a previously submitted print job. IPP support occupies COM2: virtual port (other devices such as Edgeport or MGC0M cannot use this port and must use other available COM ports).
- Easy to use interfaces - User interfaces (dialog boxes) provide everything necessary for configuring supported printers connected to the Thin Client USB port.

## Requirements and Recommendations

To print to a supported printer, the JETCET PRINT Professional must be installed on a Thin Client that is connected to a printer through the Thin Client USB port.

## Important Feature Information

Wyse JETCET PRINT Professional supports the following printers:

- Hewlett-Packard Deskjet - 600, 660, 672, 680, 690, 870, 880, 895, 990cse, and 1215.
- Hewlett-Packard Deskjet - 340C Mobile, and 400.
- Hewlett-Packard LaserJet - 4L, 4P, 4MP, 4si, 1000, and 4000.
- Hewlett-Packard LaserJet - 5L, 5P, 5MP, and 5si.
- Hewlett-Packard LaserJet - 6L, and 6P.
- Epson Stylus Color - 400, 600, 740, 777, 800, 900, and 980.
- Epson Stylus Photo - Photo, Photo 700, and Photo 875.
- Canon BubbleJet - BJC-250, 1000, 2000, 3000, 4000, and 4400.
- Canon BubbleJet - BJC-30, BJC-50, and BJC-80.
- Pentax - PocketJet and PocketJet II
- Citizen - PN60i
- Lexmark - Z53

---

## Magic USB MGC0M

Wyse Magic USB MGC0M provides driver support for the various (Serial) dongles on supported Winterm™ 3000 Series hardware.

Although the recommended procedure for inserting a hardware dongle is before booting the Thin Client, a hardware dongle may be inserted at any time after the Thin Client has been turned on. The Thin Client will automatically detect the presence of a properly inserted hardware dongle and read the Plug and Play ID of the hardware dongle. The Plug and Play ID will then be matched to a registry key that will then load the appropriate drivers. The registry keys and drivers are part of the Magic USB MGC0M Add-on. In addition, the Port Configuration applet can be used to set USB-to-Serial device settings.

## About the Add-on

Supported H/W:

- Wyse USB-to-Serial Port Converter Cable part number 920207-01
- Wyse USB-to-Parallel Port Converter Cable part number 920207-02
- MCT U232-P9 USB-RS232 Converter (9 pin)
- MCT U232-P25 USB-RS232 Converter (25 pin)

## Requirements and Recommendations

Wyse Magic USB MGC0M requires a Winterm™ 3000 Series Thin Client Model 3200LE, 3230LE, 3235LE, 3350SE, 3360SE, 3630LE, or 3730LE with at least one available USB port (or have a USB Hub).

---

## Mass Storage 3.0

Wyse Mass Storage 3.0 is a utility that supports USB Storage Devices (described as Mass Storage Devices) for use with the Winterm™ 3000 Series Thin Client.

### About the Add-on

Known Issues and Workarounds:

- Reading data from certain CD-R discs fails and causes the Thin Client to hang. As a workaround, connect empty drives before inserting the media.

### Features

Wyse Mass Storage support includes the following features:

- USB device support - Supports USB devices (with supported file systems) which conform to the USB Mass Storage Specification.
- FAT and FAT32 File System support - File system support includes FAT and FAT32 file systems (devices with an NTFS file system are not supported).
- ICA server support - An attached device is presented on an ICA server as a local drive which can be used to store documents. For example, a user can use an attached Mass Storage Device within the ICA connection through "Client drive A:" in Windows Explorer as a drive.
- USB Floppy Drive, USB Pen Drive, USB Flash Key, USB CD-ROM, and USB Zip Drive support - Supports writing and reading operations on USB Floppy Drive, USB Pen Drive, USB Flash Key, USB CD-ROM, and USB Zip Drive devices.

### Requirements and Recommendations

Wyse Mass Storage requirements and recommendations include the following:

- Winterm™ 3000 Series Thin Client with at least one available USB port.
- Supported USB devices must use FAT and FAT32 file systems.
- USB Mass Storage Device must be USB devices (with supported file systems) which conform to the USB Mass Storage Specification.
- If using FAT32 file systems, devices must be preformatted to FAT32.
- ICA Drive Mapping must be enabled.

### Important Feature Information

Wyse Mass Storage supports the following devices:

- USB Floppy Drive
  - Iomega BXXU0130 (Part Number: 31062400)
  - Smart Disk: D353FUF
  - Smart Disk 2x FDUSB-TM2
  - Smart Disk 2x FDUSB-B2
  - Sony MPF82E-U1

- USB Pen Drive
  - Belkin 32MB
  - Jet Flash 128MB
- USB Flash Key
  - FujiFilm (USB 2.0) 128MB (Part Number: 4021E2091704R237A)
  - FujiFilm (USB 2.0) 256MB (Part Number: 3528F2043964R237A)
  - Attache (PNY Technologies) 256MB
  - Attache (PNY Technologies) 128MB USB 2.0
  - Soyo Cig@r pro 32MB
  - Soyo Cigar 2 pro 128MB
  - Sony USB 2.0 Micro Vault (Part Number: B03030AD)
- USB CD-ROM
  - IBM USB CD-ROM (Part Number: 00N8239)
  - Addonics USB CD-ROM (Part Number: AECD2K32UM)
- USB Zip Drive
  - Iomega 100MB (Part Number: 30957900)
  - Iomega 250MB (Part Number: 30174102)

---

## Media Player 9.0

Wyse Media Player 9.0 allows a user to view Audio and Video files that conform to Microsoft® Media Player specifications. This Add-on software release for the Winterm™ 3000 Series uses the CE .NET 4.2 operating system or later.

Wyse Media Player 9.0 also includes the following features for Winterm™ 3000 Series Thin Client CE software release version 5.0:

- Localization of GUI in French, German, and European Spanish (provided in separate Add-ons)
- Fast Start to decrease playback start time
- Updated support for WMA Pro, WMA Lossless, and WMV Broadcast Profile

## Features

Wyse Media Player 9.0 includes the following features:

- Ability to set the default playback size - Administrators can set the default playback size of Media Player to 50% or 100% in the Media Player applet (users can also modify the playback size in the application).
- Full-screen playback - For full-screen playback, press Alt+Enter. To end full-screen playback, press ESC or press Alt+Enter.
- Optimal playback of streaming video - The amount of data on streaming videos that are downloaded can be adjusted (in the applet) for optimal playing. The default setting is 20 seconds.

## Requirements and Recommendations

Wyse Media Player 9.0 requirements and recommendations include the following:

- Internet Explorer 6.0 must be installed prior to installing Wyse Media Player 9.0.
- For proper playback, Model 3455XL must be set to either 32 bit color or set to the resolution of 1024 x 768 in 16 bit color.
- The minimum requirement for the Flash/RAM configuration is 32F/64R.
- If Microsoft® Windows 2003 Media services is installed, certain streaming videos may cause a security dialog box to appear asking you for password, username, and domain information. In such cases, you can safely ignore and close this dialog box. To prevent this security dialog box from appearing, you must configure your server so that it does not ask for authentication in such cases.
- For proper playback on Thin Client Model 3125SE, it is recommended that the default playback be set to 50% due to the nature of the chip set speed.
- If you open Media Player with your display set at 8 bit color, improper colors will display. Therefore, it is recommended to set the display to at least 16 bit color (or higher depending on the Thin Client model).
- For best sound quality during playback, it is recommended that you use powered speakers.



### Note

To optimize the playback quality of AVI files, it is recommended that you allocate enough memory space to store the largest file you are planning to play. After installing Media Player, you can allocate memory to store AVI files by using the adjustment bar found in the Memory Tab of the System application (**Control Panel | System | Memory Tab**). It is not recommended to play AVI files in a device with limited memory resources.

## Important Feature Information

The Wyse Media Player 9.0 control acts as a universal player for rendering most standard multimedia formats. This includes stored and live content in network audio and video formats. Codecs supported by Wyse Media Player 9.0 control include the following:

- **Audio Codecs**
  - Microsoft Pulse Code Modulation (PCM)
  - Microsoft GSM 6.10 Audio (GSM 610)
  - Microsoft CCITT G.711 A-Law and u-Law
  - Microsoft Adaptive Differential Pulse Code Modulation (MS ADPCM)
  - Interactive Multimedia Association Adaptive Differential Pulse Code Modulation (IMA ADPCM)
  - Microsoft MPEG-1 Layer 1; Microsoft MPEG-1 Layer 2
  - Windows Media Audio (WMA) v2, v7, v8, v9 (including Windows Media Audio 9 Voice) **Note:** Windows Media Audio v9 is supported in Windows CE .NET version 4.2 and later.
  - Fraunhofer MPEG-1 Layer 3 (MP3)

- **Video Codecs**

- Microsoft MPEG-1 (MS MPEG-1)
  - Microsoft RLE8
  - Microsoft MPEG-4 v2, v3, ISO v1
  - Windows Media Video (WMV) v7, v8, v9 (including Windows Media Video 9 Image)
    - **Note:** Windows Media Video v9 is supported in Windows CE .NET version 4.2 and later
- Windows Media Video supports the following output formats: PAL1, PAL2, PAL4, PAL8, xRGB1555, RGB565, RGB24, BGR24, and xRGB8888 (ARGB8888).  
Windows Media Video supports the following YUV formats for overlay surfaces: YUYV, YUV422 (YUY2), and YV12 (Planar YUV)

In addition, the following content formats (and their associated file name extensions) are supported:

- **Audio streaming formats**

- MPEG 1, Layer 1, 2, 3 (.mpa, .mp2, .mp3)
- Windows Media Audio (.wma)

- **Video streaming formats**

- Moving Picture Experts Group standard 1 (.mpg, .mpeg, .mpv, .mpe)
- Advanced Streaming Format (.asf)
- Windows Media Video Format (.wmv)
- Advanced Stream Redirector (.asx)
- Windows Media Audio Redirector (.wax)
- Windows Media Video Redirector (.wvx)
- Windows Media Redirector (.wmx)

- **Non-streaming (local playback) audio formats**

- Waveform Audio (.wav)
- Sound File (.snd)
- UNIX audio (.au)
- Audio Interchange File Format (.aif, .aiff, .aifc)

- **Non-streaming (local playback) video formats**

- Audio-Video Interleaved (.avi) - **Note:** Media Player supports FourCC Video Codecs (mentioned in Video Codecs above) within AVI.

---

## Microsoft VPN Point-to-Point Tunneling Protocol (PPTP) 1.1

Microsoft® VPN Point-to-Point Tunneling Protocol (PPTP) 1.1 is a network protocol that enables the secure transfer of data between a remote client (in this case the Thin Client) and an enterprise server environment by creating a Virtual Private Network (VPN) across TCP/IP-based data networks such as the Internet. It provides a password-protected path through the enterprise firewall to the enterprise server environment in which the network and session services required by Thin Clients reside.

An Internet Service Provider (ISP) must be available to provide access to the Internet. Any of the standard means of connecting to the ISP may be used, such as a dial-up modem, cable modem, and DSL modem. The connection to the ISP must be established before contacting the enterprise PPTP server.

---

## MicroTouch 5.6

Wyse MicroTouch 5.6 provides driver support to enable Touch Monitors manufactured by 3M Touch Systems, collectively referred as MicroTouch monitors in this document. The current driver supports MicroTouch monitors with RS-232 interface only. In addition, a user interface is provided to allow MicroTouch monitor configurations.



### Note

On CE .NET 4.2, Wyse MicroTouch is incompatible with ELO Touch Serial. Ensure that the ELO Touch Serial Add-on is removed *before* installing MicroTouch. Installing both Add-ons causes unpredictable malfunctions.

## About the Add-on

Recommended H/W:

- 3M Touch models with Capacitive Serial RS232 Controller (EXII)
- 3M Touch models with Resistive Serial RS232 Controller (M510, M410)
- MicroTouch M150 FPD Capacitive Touch Monitor (Part Number 11-81372-129)

Known Issues and Workarounds:

- The MicroTouch applet can be accessed only once in the Control Panel. Close and then open the Control Panel to access the applet again.
- The MicroTouch Add-on does not work in conjunction with a USB-to-Serial dongle.
- The MicroTouch Add-on does not work in conjunction with the ELO Touch Serial Add-on. It is recommended that any touch screen Add-on be removed from the Thin Client before installing the MicroTouch Add-on.
- The MicroTouch Add-on does not support touch screen monitors with SMT3V controllers (fw version 5.80). Generally, these are the monitors that the older version of the MicroTouch Add-on supports.
- User Interface displays incorrect controller type on the Information area of the Hardware tab.

## Requirements and Recommendations

Wyse MicroTouch requirements and recommendations include the following:

- Winterm™ 3000 Series Thin Client Model 3125SE, 3360SE, or 3450XE with at least one available Serial port.
- MicroTouch M150 FPD Touch Monitor.

## Important Feature Information

Wyse MicroTouch supports the following devices:

- 3M Touch models with Capacitive Serial RS232 Controller (EXII)
- 3M Touch models with Resistive Serial RS232 Controller (M510, M410)
- MicroTouch M150 FPD Touch Monitor (Part Number 11-81372-129)

---

## Personal Computer/Smart Card (PC/SC) 2.0

Wyse Personal Computer/Smart Card (PC/SC) 2.0 is a utility that allows Winterm™ 3000 Series Thin Client users to implement Smart Card technology. With Wyse PC/SC 2.0 Thin Client users can choose their Smart Card security policies and implementation. Wyse PC/SC supports the Smart Card software installed on the server. All proprietary level communication is handled completely on the Terminal Server (only the lower level PC/SC commands are sent to the Winterm™ 3000 Series Thin Client and ultimately to the Smart Card reader).

## About the Add-on

Required S/W: Wyse RDP 5.1 Add-on (see “Remote Desktop Protocol (RDP) 5.1” on page 37)

## Features

Wyse Personal Computer/Smart Card 2.0 support includes the following features:

- Privilege control - An administrator can create a Smart Card according Microsoft documentation to allow a user of the Smart Card specific login privileges on a server.
- ICA and RDP support - An ICA or RDP user can connect to a server by inserting the Smart Card into a Smart Card reader attached to a Winterm™ 3000 Series Thin Client USB port.
- Secure user login to servers - Depending on the server configuration, the user must successfully complete an Enter PIN dialog box or some other means of authentication to login to a server.
- Connection control - An administrator can configure whether or not to disconnect a user from the server if a user removes the Smart Card during an active session.
- Complete file package - All the files needed to use Wyse PC/SC 2.0 are provided, including registry files (setting.reg and factory.reg), Smart Card reader drivers, and CE .NET PC/SC Stack files.

## Requirements and Recommendations

Wyse Personal Computer/Smart Card 2.0 requirements and recommendations include the following:

- For ICA connection support to a MetaFrame XP FR2 server, you must be running Wyse ICA version 6.3 or later.
- For RDP connection support to a Windows 2003 Server, you must be running Wyse RDP version 5.1.
- A supported Smart Card reader must be attached to a Winterm™ 3000 Series Thin Client USB port.
- Only one active Terminal Server session at a time can access the Smart Card reader. The first Terminal Server session retains access until the session is disconnected. Subsequent Terminal Server sessions do not disturb the first Terminal Server session while the first is connected. Subsequent Terminal Server sessions must be reconnected if Smart Card reader access is desired and the first session has already been closed.
- Multiple Smart Card readers on the same Winterm™ 3000 Series Thin Client are not supported.

## Important Feature Information

Wyse Personal Computer/Smart Card 2.0 supports several Smart Card vendors and models. The software that you purchase to use with the PC/SC compliant readers will determine the type of actual Smart Cards that comply with your hardware. As long as the software you purchase uses PC/SC standards, Wyse Personal Computer/Smart Card 2.0 is supported.

Wyse Personal Computer/Smart Card 2.0 supports the following Smart Card vendors and models (see Table 3):

**Table 3 Supported Smart Card Vendors and Models**

Vendor	Model	Description	Web Link
SCM Microsystems	SCR301	Smart Card Reader USB	<a href="http://www.scmmicro.com/security/smart.html">http://www.scmmicro.com/security/smart.html</a>
Schlumberger	Reflex USB Part Number 901251	SC Reader USB	<a href="http://www.axalto.com/infosec/reflex_usb.html">http://www.axalto.com/infosec/reflex_usb.html</a> and <a href="http://www.scmegastore.com">http://www.scmegastore.com</a>
Active Card	Active Card v2.0 Part Number ZFG-9800-A	Smart Card Reader USB	<a href="http://www.activcard.com/products/usb_reader.html?m=2">http://www.activcard.com/products/usb_reader.html?m=2</a>
OmniKey	Cardman 3121	Smart Card Reader USB	<a href="http://www.omnikey.com/en/produkt_details.php3?produkt=1&amp;variante=47">http://www.omnikey.com/en/produkt_details.php3?produkt=1&amp;variante=47</a>
OmniKey	Cardman 2020	Smart Card Reader USB	<a href="http://www.omnikey.com/en/produkt_details.php3?produkt=1&amp;variante=3">http://www.omnikey.com/en/produkt_details.php3?produkt=1&amp;variante=3</a>
Cherry Integrated Keyboard	RS 6700USB Part Number G83-6702 Smart Board	USB Keyboard with Integrated Smart Card Reader	<a href="http://www.cherrycorp.com">http://www.cherrycorp.com</a>

---

## Remote Desktop Protocol (RDP) 5.1

Wyse Remote Desktop Protocol (RDP) 5.1 for Microsoft® Windows® CE .NET allows Winterm™ 3000 Series Thin Client users to connect remotely to a desktop computer running Microsoft Windows NT®, Windows 2000 or 2003, or Windows XP Professional, or a server running Microsoft® Windows NT® Server 4.0, Terminal Server Edition. RDP allows the Thin Client to execute Windows applications within a Windows graphical user interface (GUI) environment, even though they are actually being executed on the server. Administrators can create, edit, launch and delete an RDP connection in different ways depending on the desktop settings.

### Features

Wyse RDP 5.1 includes the following features:

- Client Activation License Utility.
- Support for three levels of encryption.
- Variable bandwidth allocation through client-side bitmap caching and optional compression for low-bandwidth connections, significantly improving performance over low-bandwidth connections.
- Roaming disconnect that allows a user to disconnect from a Terminal Services session without logging off or being logged off.
- Multichannel-capable protocol that permits separate virtual channels for carrying presentation data, Serial-device communication (keyboard and mouse), licensing information, and heavily encrypted data.
- Multipoint data delivery that allows data from an application to be delivered to multiple parties without having to send the same data to each session individually.
- Remote control lets the support staff view and control a Terminal Services session. Sharing input and display graphics between two Terminal Services sessions lets a support person diagnose and resolve problems remotely.
- Network Load Balancing (NLB), available in Windows 2000 Advanced Server and Datacenter Server.
- High Color 16-bit graphics.
- Copy-and-paste capability between the remote session and the local Thin Client.
- Common Clipboard for simple data interchange.
- Local-printer redirection so server applications can print locally to the client device.
- Local-audio playback so server applications can direct audio to the client device or play at the terminal server.
- Local-port redirection so server applications can use parallel and COM ports of the client device.
- Local-file redirection so server applications can use the file system of the client device.

---

## Remote Desktop Protocol (RDP) 5.5

Wyse Remote Desktop Protocol (RDP) 5.5 for Microsoft® Windows® CE .NET allows Winterm™ 3000 Series Thin Client users to connect remotely to a desktop computer running Microsoft Windows NT®, Windows 2000 or 2003, or Windows XP Professional, or a server running Microsoft® Windows NT® Server 4.0, Terminal Server Edition. RDP allows the Thin Client to execute Windows applications within a Windows graphical user interface (GUI) environment, even though they are actually being executed on the server. Administrators can create, edit, launch and delete an RDP connection in different ways depending on the desktop settings.

### Features

Wyse RDP 5.5 includes the following features:

- Unicode compatibility, enabling you to send Unicode values of characters as virtual key codes to the keyboard input.
- Supports operation in any environment that allows network localization, automatic disconnect, or remote configuration.
- Variable bandwidth allocation through client-side bitmap caching and optional compression for low-bandwidth connections, significantly improving performance over low-bandwidth connections.
- Multichannel-capable protocol that permits separate virtual channels for carrying presentation data, Serial-device communication (keyboard and mouse), licensing information, and heavily encrypted data.
- Remote control lets the support staff view and control a Terminal Services session. Sharing input and display graphics between two Terminal Services sessions lets a support person diagnose and resolve problems remotely.
- Network Load Balancing (NLB), available in Windows 2000 Advanced Server and Datacenter Server.
- High color 8-bit, 16-bit, or 24-bit graphics are supported if they are also supported in the graphics driver.
- Clipboard sharing, also known as clipboard redirection. The local clipboard becomes a part of the clipboard viewer chain in the remote session, allowing the user to copy and paste between applications running in both the remote session and on the local client.
- Local-printer redirection so server applications can print locally to the client device.
- Local-audio playback so server applications can direct audio to the client device or play at the terminal server.
- Local-port redirection so server applications can use parallel and COM ports of the client device.
- Local drive redirection so server applications can use the file system (including ATA) of the client device.
- File redirection filter that permits exposing only specific directories. If you specify that only external storage (such as Compact Flash or USB storage) be exposed through the redirected drive, information is saved only to the redirected drive.
- TS CAL maintenance tool. This control panel utility is available in any OS design that supports Control Panel programs, such as the Enterprise Web Pad. It requires that the RDP client be in the run-time image.

---

## Remote Shadow 2.0

Wyse Remote Shadow™ 2.0 provides the following support to the Winterm™ 3000 Series Thin Client:

- Allows the remote system running the VNC Viewer to shadow a Winterm™ 3000 Thin Client and remotely interact with the user interface of the Thin Client.
- Allows the remote system to configure a Winterm™ 3000 Thin Client using the following keyboard languages: U.S. English, French, German, Spanish, Spanish Variation, and U.K. English.

### Features

Wyse Remote Shadow 2.0 includes the following features:

- Expanded support for international languages - International languages now include U.S. English, French, German, Spanish, Spanish Variation, and U.K. English (international language support includes CE .NET 4.0 or 4.1 using Remote Shadow 2.0 build 12.0 only, and CE .NET 4.2 using Remote Shadow 2.0 build 13.0 or later).
- System Password control for Administrators - Allows administrators to enable or disable the system password.
- VNC Viewer access control for Administrators - Administrators can prevent end users from disallowing VNC Viewer access to the end user Thin Client.

### Requirements and Recommendations

Wyse Remote Shadow 2.0 requirements and recommendations include the following:

- To shadow a Winterm™ 3000 Thin Client, the VNC Viewer must be installed on the remote server and the Remote Shadow add-on must be installed on the Winterm™ 3000 Thin Client.
- Remote Shadow 2.0 can be installed on any CE .NET 4.x version, and on any hardware platform.
- VNC client Real VNC version 3.3.7.0 is compatible with a VNC server with Rapport using Tight VNC Viewer version 1.2.3.
- To support international languages (including U.S. English, French, German, Spanish, Spanish Variation, and U.K. English), both the server and the Thin Client must have the keyboard language configured for the same language. For example, to support French, both the server keyboard and Thin Client keyboard must be configured to French.

## Screen Lock

Wyse Screen Lock allows users to lock the Thin Client using the **Ctrl+Alt+Del** key combination or local screen saver timeout. After locking, the user is required to enter the Citrix Program local terminal credential to unlock the Thin Client.

### Features

Wyse Screen Lock includes the following features:

- Lock the Thin Client using the local terminal screen lock.
- All activated sessions (ICA/RDP/TEC/IE) cannot be accessed until the Thin Client is unlocked.

### Requirements and Recommendations

Wyse Screen Lock requirements and recommendations include the following:

- Screen Lock must be installed on the Winterm™ 3000 Series Thin Client.
- Local terminal security must be enabled.

---

## Screen Lock ICA Virtual Channel 2.0

Wyse Screen Lock ICA™ Virtual Channel 2.0 provides the following support to the Winterm™ 3000 Series Thin Client:

- Provides the ability to lock all opened ICA sessions by using the server when the screen saver time-out has been activated.
- Provides the ability to unlock all opened and locked ICA sessions using the server log-in authentication instead of local Thin Client authentication.

### Features

Wyse Screen Lock ICA™ Virtual Channel 2.0 includes the following features:

- Lock all opened ICA sessions - Screen Lock ICA Virtual Channel uses Citrix Virtual Channel to communicate with the Citrix MetaFrame Server to provide the ability to lock all opened ICA sessions.
- Unlock all opened and locked ICA sessions using server log-in authentication - Since the ICA sessions are locked using a server lock mechanism (not the Winterm™ 3000 Series local security), you can unlock a locked ICA session using server authentication.
- Easy to use interface - Enable or disable the Screen Lock ICA™ Virtual Channel in the Winterm™ 3000 Series user interface.

## Requirements and Recommendations

Wyse Screen Lock ICA™ Virtual Channel 2.0 requirements and recommendations include the following:

- Screen Lock ICA™ Virtual Channel 2.0 must be installed on both the Winterm™ 3000 Series Thin Client and the Citrix MetaFrame Server. You must also install the Server Virtual Channel software on the Citrix MetaFrame Server.
- ICA client for CE .NET version 7.0 Add-on build 46 or later is required.

---

## Screen Saver

Wyse Screen Saver allows Winterm™ 3000 Series Thin Clients to display a screen saver after a specified period of keyboard and mouse inactivity. After installing this Add-on, the screen saver options in the display applet become available. If enabled, a user can select the wait time in minutes and after that time of inactivity has been reached, the screen will turn black and a floating Microsoft bitmap will appear on different parts of the screen.

---

## Simple Network Management Protocol (SNMP) 2.1

Wyse Simple Network Management Protocol (SNMP) 2.1 Add-on is an SNMP Extension agent that is installed on CE .NET in associate with Microsoft® SNMP services to provide any remote management software using SNMP commands to manage the Winterm™ 3000 Series Thin Clients.

The Wyse SNMP Extension Agent supports the Wyse private Management Information Base (MIB) for Winterm™ 3000 Series products. With the add-on installed, a generic SNMP manager can query the Thin Client on various information including Build Number, Memory Size, and Flash Size. Details of MIB support are described in the `WBT3MIB.MIB` file released with the SNMP Add-on.

---

## Terminal Emulation Client (TEC) 5.0

Wyse Terminal Emulation Client (TEC) 5.0 is used by the Winterm™ 3000 Series Thin Client for running legacy character-based applications on remote computers. The administrator can set up a wide variety of connections that a user can open. The host computers are accessed through TCP/IP network, dial-up modem, or Serial port.

### About the Add-on

Pericom build: 46860 (Standard); A6860 (Tandem)

### Important Feature Information

Wyse TEC supports the following emulations:

- ADDS A2
- AIXTerm
- ANSI BBS
- AT 386
- HP 700-92/96
- HZ1500
- IBM 3151
- IBM 3270
- IBM 5250
- SCO Console
- TVI910+
- TVI920
- TVI925
- TVI950
- TVI955
- VT52
- VT100
- VT500 7-bit
- VT500 8-bit
- VT PCTERM
- WY50
- WY50+
- WY60
- WYSE PCTerm

**Note**

The Tandem version of TEC includes all supported emulations plus: TA6530.

---

## ThinPrint ICA Virtual Channel 5.5

Wyse ThinPrint ICA Virtual Channel 5.5 allows Winterm™ 3000 Series Thin Client users to print locally to a printer that is attached to the Thin Client from an ICA session through the virtual channels of terminal server communication. It can receive print jobs and send them directly to printers or network printers with embedded network cards. In addition, Wyse ThinPrint ICA Virtual Channel 5.5 supports LPD printing.

### About the Add-on

Known Issues and Workarounds:

- ThinPrint does not work after setting up a printer using a Thin Client without a built-in LPT port. As a workaround, reboot the Thin Client to enable ThinPrint again.
- Some edit controls in the ThinPrint set-up dialog do not have assigned hotkeys and tab commands.
- Invalid value for Device Write Timeout field is saved.

### Links to User and Administrator Guides and Services

For additional information on ThinPrint, and for information on configuring ThinPrint Server Engine software, visit the ThinPrint Web site at: <http://www.thinprint.com>.

### Features

Wyse ThinPrint ICA Virtual Channel 5.5 includes the following features:

- Driver support to enable ThinPrint printing.
- User interface to enable or disable the ThinPrint driver.
- Easy to use interfaces - User interfaces provide everything necessary for configuring printers and ports.
- Improved performance - The ThinPrint client receives print data from the server, decompresses it, and sends it to the print device.
- ThinPrint AutoConnect - Automatically creates client printer objects on the Terminal Server when the session is opened.
- Virtual Channel - Allows administrators to use devices outside firewalls without the need to open ports in those firewalls.

### Requirements and Recommendations

Wyse ThinPrint ICA Virtual Channel 5.5 requirements and recommendations include the following:

- When printing through a USB port, the Wyse JETCET Add-on (version 3.01) build 18 or later must be installed.
- ThinPrint .print Server Engine software (build 5.5 or later) must be installed on the server.
- A valid ICA connection must be established when printing with ICA Virtual Channel 5.5.

## Important Feature Information

This section provides important information on the following features:

- Printing over ICA/RDP - Both the Citrix protocol ICA and the Microsoft protocol RDP enable print jobs to be sent to a session user through the virtual channels of Terminal Server communication (ICA or RDP). This .print print mode is also possible to clients in masked networks.
- ThinPrint AutoConnect - ThinPrint AutoConnect is the .print tool for automatically-created printers. The tool automatically creates client printer objects on the Terminal Server when the session is opened.

---

## ThinPrint TCP/IP 5.5

Wyse ThinPrint TCP/IP 5.5 allows Winterm™ 3000 Series Thin Client users to print locally to a printer that is attached to the Thin Client through the TCP/IP protocol (unless the Thin Client cannot be addressed due to firewalls or Network Address Translation). It can receive print jobs and send them directly to printers or network printers with embedded network cards. In addition, Wyse ThinPrint TCP/IP 5.5 supports LPD printing.

### About the Add-on

Known Issues and Workarounds:

- ThinPrint does not work after setting up a printer using a Thin Client without a built-in LPT port. As a workaround, reboot the Thin Client to enable ThinPrint again.
- Some edit controls in the ThinPrint set-up dialog do not have assigned hotkeys and tab commands.
- An invalid value for Device Write Timeout field is saved.

### Links to User and Administrator Guides and Services

For additional information on ThinPrint, and for information on configuring ThinPrint Server Engine software, visit the ThinPrint Web site at: <http://www.thinprint.com>.

### Features

Wyse ThinPrint TCP/IP 5.5 includes the following features:

- Driver support to enable ThinPrint printing.
- User interface to enable or disable the ThinPrint driver.
- Easy to use interfaces - User interfaces provide everything necessary for configuring printers and ports.
- Improved performance - The ThinPrint client receives print data from the server, decompresses it, and sends it to the print device.
- ThinPrint AutoConnect - Automatically creates client printer objects on the Terminal Server when the session is opened.
- Efficiency within firewalls - Provides more efficiency for devices within firewalls.

## Requirements and Recommendations

Wyse ThinPrint TCP/IP 5.5 requirements and recommendations include the following:

- When printing through a USB port, the Wyse JETCET Add-on (version 3.01) build 18 or later must be installed.
- ThinPrint .print Server Engine software (build 5.5 or later) must be installed on the server.

## Important Feature Information

This section provides important information on the following features:

- Printing over TCP/IP - Session users communicate with the Terminal Server over the Citrix protocol ICA or the Microsoft protocol RDP. With ThinPrint .print they are able to print over TCP/IP in every case. The print jobs are sent outside the Thin Client session directly to the client or network printer (separation of the data stream). This improves print performance since available bandwidth can be better used. Moreover, each user can use all the printers in the network which are reachable over TCP/IP - regardless of the type of client that is used (printing over TCP/IP to clients in masked networks, however, is not supported).
- ThinPrint AutoConnect - ThinPrint AutoConnect is the .print tool for automatically-created printers. The tool automatically creates client printer objects on the Terminal Server when the session is opened.

---

## USB Modem

Wyse USB Modem allows Winterm™ 3000 Series Thin Clients to connect to industry standard modems to facilitate access to remote servers, including but not limited to:

- Remote ICA connections
- Remote RDP connections
- Remote Terminal Emulation connections

## About the Add-on

Recommended H/W:

- ZyXel - Omni 56K USB
- Actiontec - Call Waiting Modem UM 100
- Creative Labs - Modem Blaster USB DE5670
- Elsa AG - Microlink 56K USB US
- Compaq - 56K USB Modem, Fax Series NC4008



### Note

USB Modem registry settings are lost after upgrading from CE 4.0 or 4.1 to 4.20 (only COM1 and COM2 settings are preserved).

## Requirements and Recommendations

Wyse USB Modem requires a Winterm™ 3000 Series Thin Client with at least one available USB port.

## WaveLAN 7.62

Wyse WaveLAN provides the following support to several 802.11b Wireless PCMCIA adapters:

- Driver support to enable several Wireless PCMCIA adapters.
- A user interface to adjust client adapter settings and display information about the adapter.

### Features

- Driver version 7.62
- Static 64/128-bit WEP Encryption support

### About the Add-on

Supported H/W:

- Avaya Wireless PCMCIA World Card 11 Mbps Gold/Silver
- Compaq WL110 Wireless PC Card 11Mbps
- Lucent Orinoco PCMCIA Wireless PC Card 11Mbps Gold/Silver
- Hewlett-Packard Procurve PCMCIA 802.11b AP Card

### Requirements and Recommendations

Wyse WaveLAN requirements and recommendations include the following:

- PC Card or Cardbus slot.
- PCI to PCMCIA adaptor card.

---

## Wyse Viewers

Wyse Viewers are sold separately and include:

- “Excel Viewer 1.0”
- “Portable Document Format (PDF) Viewer 1.0” on page 48
- “PowerPoint Viewer 1.0” on page 49
- “Word Viewer 1.0” on page 50

### Excel Viewer 1.0

Wyse Excel Viewer allows a user to view Excel files (using Internet Explorer) that conform to Microsoft® Excel specifications (Excel .xls document formats for Microsoft® Office 97, 2000, and XP).

#### Features

Wyse Excel Viewer includes the following features:

- Launch Wyse Excel Viewer directly through Internet Explorer - Users can launch the Wyse Excel Viewer from an Internet Explorer page that has a reference to an Excel document (user clicks the Excel link and selects Open from the current location). The Viewer maintains the integrity and content of the original file without additional software, file conversion, ActiveSync filters, or desktop connection required.
- Toggle between windows - Users can toggle between an Excel Viewer window and other open windows on the desktop.
- Robust navigation ability - Users can navigate within the Excel document using mouse, keyboard, and page navigation.
- Robust viewing ability - Users can change the zoom level (magnification) for the document (25%, 50%, 100%, Page Width, or Full Page) for better viewing experience.

#### Requirements and Recommendations

Wyse Excel Viewer requirements and recommendations include the following:

- Wyse Microsoft® Internet Explorer 6.0 for Microsoft® Windows® CE Add-on must be installed prior to installing Wyse Excel Viewer (see “Internet Explorer 6.0” on page 27).
- Document must be Microsoft® Office 97, 2000, or XP Excel .xls document format.

## Portable Document Format (PDF) Viewer 1.0

Wyse PDF Viewer allows a user to view PDF files (using Internet Explorer) that conform to Adobe Portable Document Format specifications (.pdf document formats version 1.3).

### Links to User and Administrator Guides and Services

For additional information on Adobe PDF, visit the Adobe Web site at: <http://www.adobe.com/products/acrobat/adobepdf.html>.

### Features

Wyse PDF Viewer includes the following features:

- Launch Wyse PDF Viewer directly through Internet Explorer - Users can launch the Wyse PDF Viewer from an Internet Explorer page that has a reference to a PDF document (user clicks the PDF link and selects Open from the current location).
- Toggle between windows - Users can toggle between a PDF Viewer window and other open windows on the desktop.
- Robust navigation ability - Users can navigate within the PDF document using mouse, keyboard, and page navigation.
- Robust viewing ability - Users can change the zoom level (magnification) for the document (25%, 50%, 100%, Page Width, or Full Page) for better viewing experience.

### Requirements and Recommendations

Wyse PDF Viewer requirements and recommendations include the following:

- Wyse Microsoft® Internet Explorer 6.0 for Microsoft® Windows® CE Add-on must be installed prior to installing Wyse PDF Viewer (see "Internet Explorer 6.0" on page 27).
- PDF file must be version 1.3 (which maps to Acrobat 4.0).

## PowerPoint Viewer 1.0

Wyse PowerPoint Viewer allows a user to view PowerPoint files (using Internet Explorer) that conform to Microsoft® PowerPoint specifications (PowerPoint .ppt and .pps formats for Microsoft® Office 97, 2000, and XP).

### Features

Wyse PowerPoint Viewer includes the following features:

- Launch Wyse PowerPoint Viewer directly through Internet Explorer - Users can launch the Wyse PowerPoint Viewer from an Internet Explorer page that has a reference to PowerPoint files (user clicks the PowerPoint link and selects Open from the current location). The Viewer maintains the integrity and content of the original files without additional software, file conversion, ActiveSync filters, or desktop connection required.
- Toggle between windows - Users can toggle between a PowerPoint Viewer window and other open windows on the desktop.
- Robust navigation ability - Users can navigate within the PowerPoint presentation using mouse, keyboard, and page navigation.
- Robust viewing ability - Users can change the zoom level (magnification) for the document (25%, 50%, 100%, Page Width, or Full Page) for better viewing experience.

### Requirements and Recommendations

Wyse PowerPoint Viewer requirements and recommendations include the following:

- Wyse Microsoft® Internet Explorer 6.0 for Microsoft® Windows® CE Add-on must be installed prior to installing Wyse PowerPoint Viewer (see "Internet Explorer 6.0" on page 27).
- Presentation must be Microsoft® Office 97, 2000, or XP PowerPoint .ppt or .pps formats.

## Word Viewer 1.0

Wyse Word Viewer allows a user to view Word files (using Internet Explorer) that conform to Microsoft® Word specifications (Word .doc document formats for Microsoft® Office 97, 2000, and XP).

### Features

Wyse Word Viewer includes the following features:

- Launch Wyse Word Viewer directly through Internet Explorer - Users can launch the Wyse Word Viewer from an Internet Explorer page that has a reference to Word documents (user clicks the Word link and selects Open from the current location). The Viewer maintains the integrity and content of the original files without additional software, file conversion, ActiveSync filters, or desktop connection required.
- Toggle between windows - Users can toggle between a Word Viewer window and other open windows on the desktop.
- Robust navigation ability - Users can navigate within the Word document using mouse, keyboard, and a page navigation.
- Robust viewing ability - Users can change the zoom level (magnification) for the document (25%, 50%, 100%, Page Width, or Full Page) for better viewing experience.

### Requirements and Recommendations

Wyse Word Viewer requirements and recommendations include the following:

- Wyse Microsoft® Internet Explorer 6.0 for Microsoft® Windows® CE Add-on must be installed prior to installing Wyse Word Viewer (see “Internet Explorer 6.0” on page 27).
- Document must be Microsoft® Office 97, 2000, or XP Word .doc document format.

---

## Wyse Wi-Fi 2.0 B

Wyse Wi-Fi 2.0 B uses the CE .NET 4.2 operating system (Wyse Wi-Fi 2.0 B builds 13 or later run on CE .NET 4.2). Wyse provides the following support to the Wyse Wi-Fi 2.0 B:

- Driver support to enable the Wyse Wi-Fi 2.0 B
- A user interface to adjust client adapter settings and display information about the adapter

### About the Add-on

Supported H/W: Wyse-sold Actiontec devices 11Mbps Wi-Fi 2.0 A and B

**Note**

Use Thin Client Model 3125SE with Sidecar: Part Number 920218-01, or  
Standard External Wireless: Part Number 920218-02.

### About the adapters

The Wyse Wi-Fi 2.0 B (802UI2, 802UI3(B)) provides wireless LAN function in USB form factor. The wireless LAN function is compliant with IEEE802.11b standard with data rates up to 11Mbps.

### Features

Wyse Wi-Fi 2.0 B includes the following features:

- New driver - Wyse Wi-Fi 2.0 B driver version 3.00.02
- Static 64/128-bit WEP encryption support
- Multiple WLAN configurations profiles

**Winterm™ 3000 Series Add-on Administrators Guide**  
**Issue: 083004**

Written and published by:  
Wyse Technology Inc., August 2004

Created using FrameMaker® and Acrobat®